

AVENTICS 

MAREX ECS
DESIGNED TO
PERFORM





Design: A genuine eye-catcher on your bridge

Excellent design supports operation in all situations. The straightforward, timeless style of the Marex ECS goes well with any ship design. The unmistakable keypad icons ensure intuitive operation.

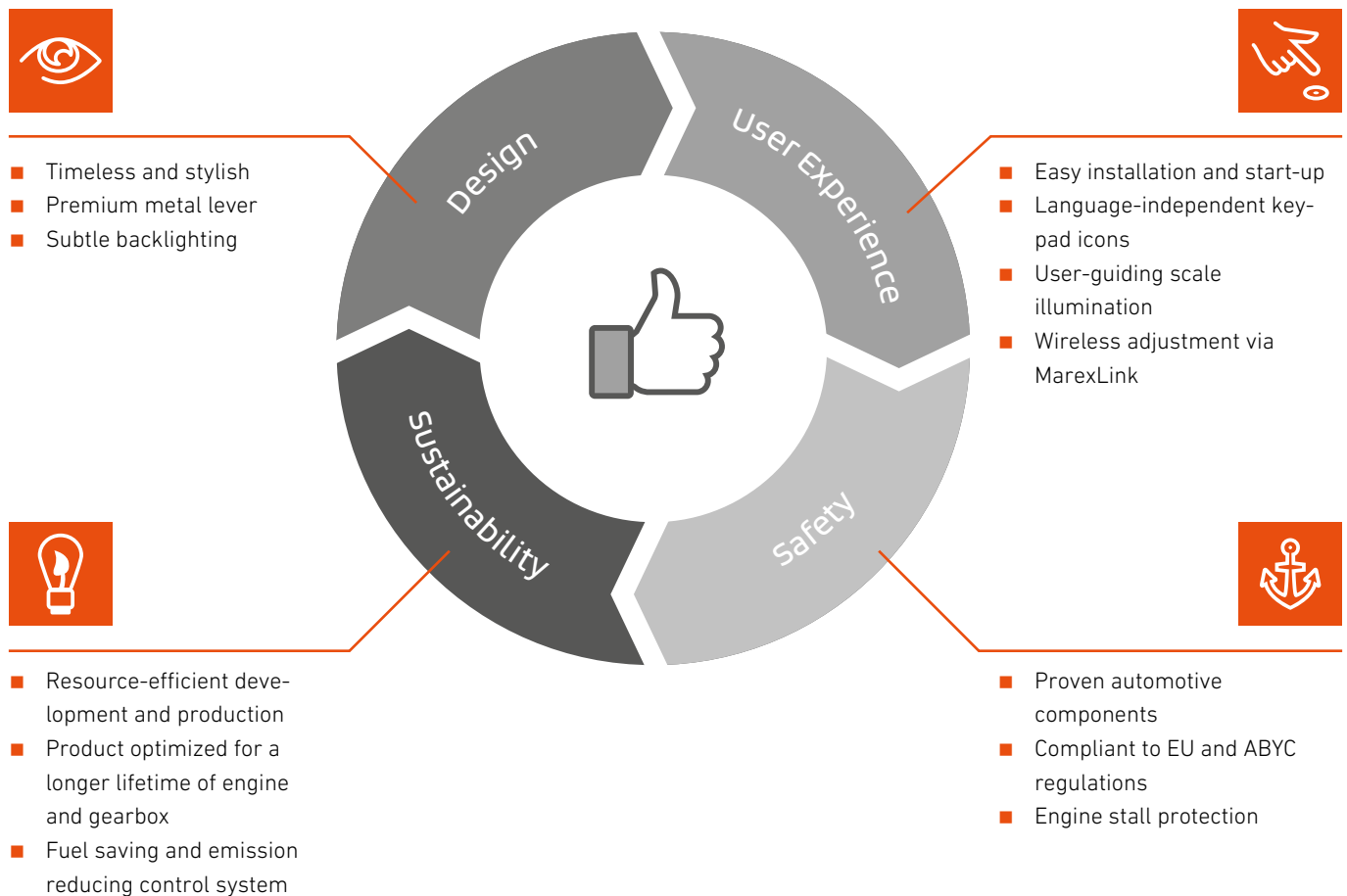
The control head is a perfect fit for every yacht: The chrome-plated metal lever is a must-have and meets the highest requirements with regard to design and functionality. Alternatively, the black version made of high-end synthetics focuses on the essentials and takes up the attractive design.



Marex ECS – The Easy Control System

Marex ECS combines user convenience with excellent functionality and good looks. Its timeless appearance blends in smoothly with any ship design, pleasure craft or work boat. State-of-the-art CAN bus technology is used to control single or twin diesel engine applications smoothly from up to four control stations. Needless to say that verified quality and the

highest production standards ensure a maximum of reliability and safety in operation. After a simple start-up procedure, Marex ECS is good to go. Optionally, control features can be adapted for a gentle operation which will protect engine and gearbox. Thanks to the integrated WiFi, the adjustments are easily made on a smartphone, tablet computer or laptop.





User experience: Application know-how meets state-of-the art technology

With the Marex ECS, AVENTICS is introducing one of the most innovative engine remote controls to the market. Its sophisticated technology combines functionality with easy handling resulting in reduced installation and commissioning efforts and easy operation features:

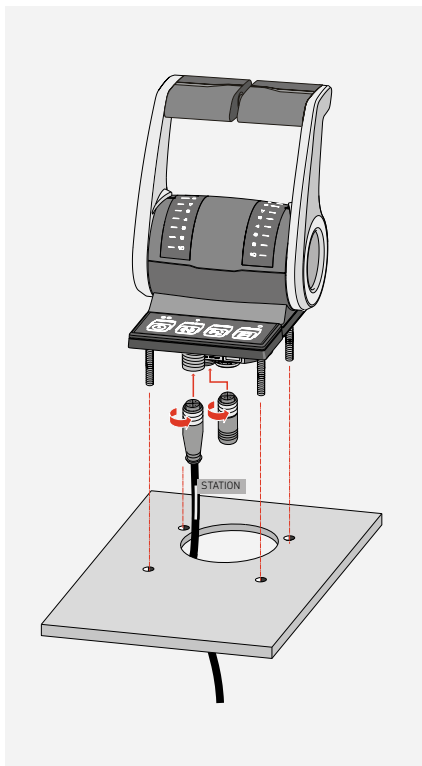
Ready-to-plug-in components reduce the wiring effort. Color-coded, preassembled cables facilitate the installation and help to avoid mistakes. Last but not least, Marex ECS provides a smart autoconfiguration feature when starting up the system or replacing components.

If necessary, system settings can be modified via MarexLink using a smartphone, tablet computer or laptop without additional software and hardware adapters. A help menu is provided and error messages can be displayed as clear text. The Marex ECS control head features an illuminated scale which guides the user through the operation.

- Plug-in solution
- Color-coded cabling
- Auto-configuration
- Fine-adjustment via WiFi
- Intuitive operation

Time-saving installation and start up with possibility to fine-adjust

Plug-in



Power-up

Auto-config

Self-check

Ready to go

Optimize



MarexLink

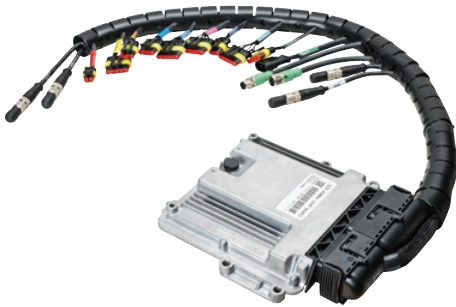




Safety: Reliable operation in all waters

Reliability made in Germany. Our products pair 70 years of experience and state-of-the-art technology. The Marex ECS sets benchmarks with regard to safety and meets the highest production and quality standards. Its components were developed in accordance with the relevant directives for the marine industry:

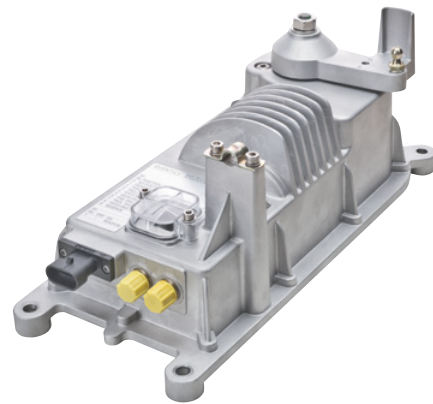
- EU Directive 2013/53/EU
- IACS E10
- ABYC-P24



▲ Marex ECS Control Unit and Wiring Harness

Its hardware originates from proven automotive applications. The well-established CAN bus technology ensures reliable communication between the components.

With Marex ECS, you can maneuver your boat safely. The integrated stall protection makes sure the engine remains available at all times and in any situation.



▲ Marex ECS Actuator



Sustainability: Our responsibility for the future

When designing our products, we think ahead: Resource-efficiency as well as a long life of operation are essential features – as proven by endurance testing with over one million lever actu-

ations. Your ship will also benefit: The settings of Marex ECS can be optimized for a longer life of engine and gearbox. At the same time, this will reduce the fuel consumption and emissions.

AVENTICS

www.marex-shipcontrols.com

marinesales@aventics.com



Germany

AVENTICS GmbH
Marine
Ulmer Straße 4
30880 Laatzen, Germany
Tel +49 511 2136-251
Fax +49 511 2136-165
www.marex-shipcontrols.com
marinesales@aventics.com

USA

AVENTICS Corporation
PO Box 13597
1953 Mercer Road (40511)
Lexington, KY 40512
Tel +1 859 254-8031
marine.us@aventics.com
www.aventics.us

China

AVENTICS Group
2002 Unit, Asdendas Plaza, No 333
Tianyaoqiao Road, Xuhui district
Shanghai, China, 200030
Tel +86 21 2426 9666
www.aventics.cn

Further contacts

www.aventics.com/contact
info@aventics.com

Your contact:



The data specified above only serve to describe the product. No statements concerning a certain condition or suitability for a certain application can be derived from our information. The information given does not release the user from the obligation of own judgment and verification. It must be remembered that our products are subject to a natural process of wear and aging.