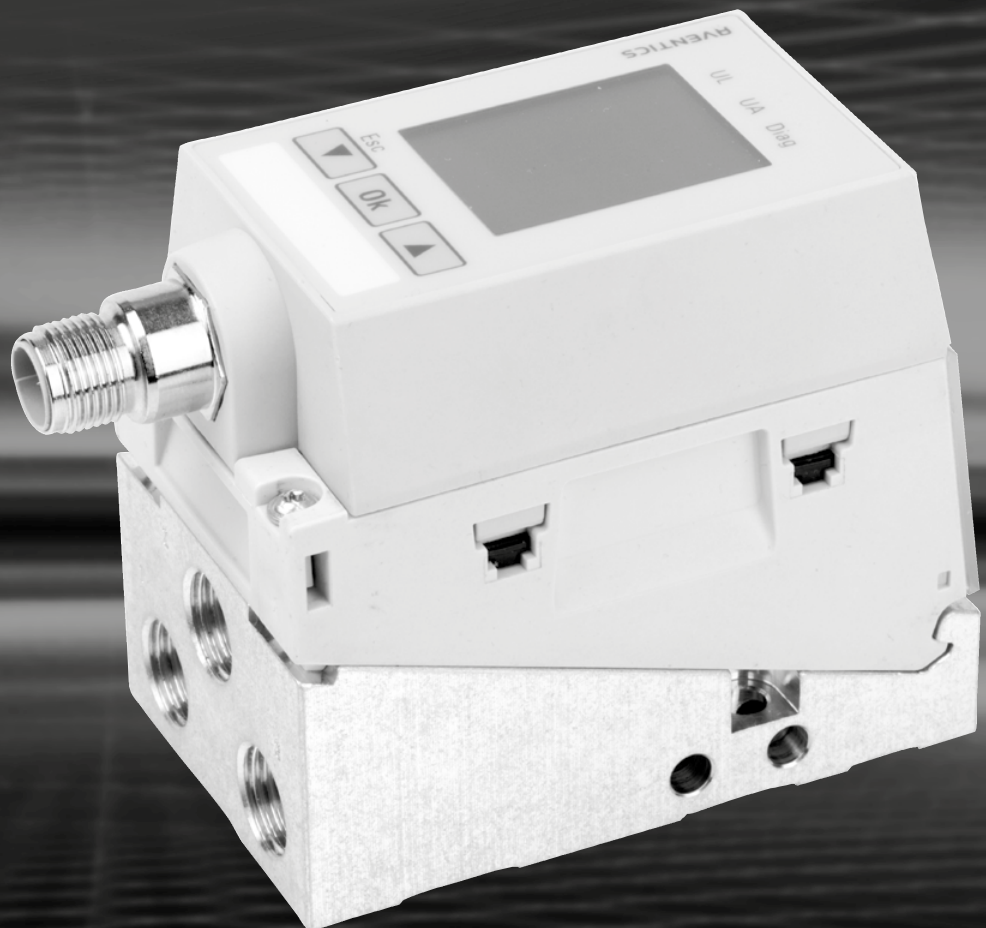
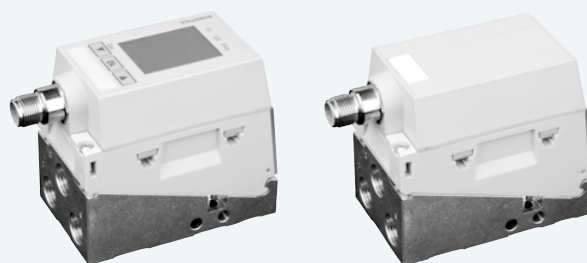
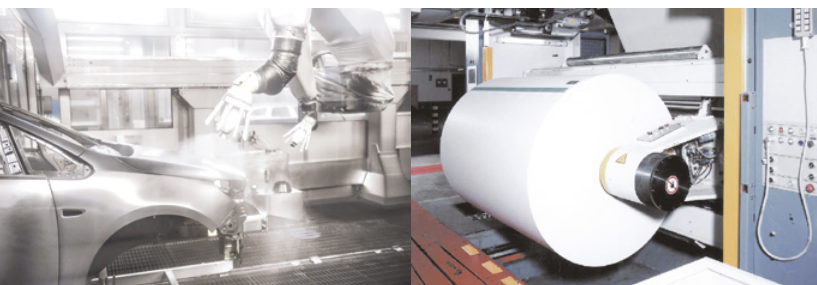


AVENTICS<sup>A</sup>

EV03 SERIES  
INTELLIGENT CONTROL  
WITH ELECTROPNEUMATICS

Pneumatics  
It's that easy





## Continuously adjustable compressed air flow

EV03 series electropneumatic pressure regulators simplify your application. They are compact and lightweight, easy to assemble, and offer optimized flow resistance. The regulator dynamics, regulator precision, and pressure range can be adjusted at any time via the display or the IO-Link.

### The EV03 series offers clear advantages for commissioning, application, and storage

EV03 increases the degrees of freedom for developers and users. Rather than having to use particular versions for different applications, users only need a single pressure regulator type to flexibly program varying machine requirements. EV03 valves thus simplify system commissioning, offer flexible application, and decrease the variety of parts in storage.

### Display for added convenience

- Direct reading of set values and parameters on site
- Manual set point specification
- Display lock can be turned on or off
- Parameter setting or adjustment



### Pilot valves for indirect control

EV03 works according to the principle of indirect control with pilot valves. A key feature of this control principle is that, in case of a supply voltage failure and thus a lack of electrical control, mechanical pressure control is maintained thanks to the pressure enclosed in the pilot volume – even if there is air consumption on the main valve. Typical uses include applications that require flexible set points, which are only changed occasionally.

	Classic Version	Smart Version
<b>Pressure range</b>	0 – 10 bar	0 – 1 bar, 0 – 2 bar, 0 – 6 bar, or 0 – 10 bar
<b>Set-up</b>	Pilot control	Targeted pilot control
<b>Response to power failure</b>	Last pressure value maintained and even mechanically adjusted	2 variants: Hold last pressure value or exhaust
<b>Reproducibility</b>	< 180 mbar	< 40 mbar
<b>Hysteresis</b>	< 200 mbar	< 50 mbar
<b>Display and parameterization</b>	LED, optional display and keys. Parameter setting via display	LED, optional display and keys. Parameter setting via display or IO-Link
<b>Set point</b>	0 – 10 V, 4 – 20 mA	0 – 10 V, 4 – 20 mA 0 – 20 mA, IO-Link
<b>Actual value</b>	Analog Switch output	Analog Switch output 10 V constant

- ✓ Tailored, on-demand pressure control
- ✓ Lightweight materials and compact design
- ✓ Simple assembly and optimized storage
- ✓ Various electrical connection options
- ✓ Extremely flexible parameterization
- ✓ Improved energy efficiency

### AVENTICS Corporation

1953 Mercer Road, Lexington, KY [www.aventics.com/us](http://www.aventics.com/us) [info.us@aventics.com](mailto:info.us@aventics.com)  
 R500000513/2017-04/EN Subject to change. Online version.  
 © AVENTICS Corp. This document, as well as the data, specifications and other information set forth in it, are the exclusive property of AVENTICS Corp. It may not be reproduced or given to third parties without its consent.

