

Cylinder accessories ▶ Shock absorbers

SA2 series

Brochure

Rexroth
Pneumatics



Cylinder accessories ▶ Shock absorbers

SA2 series



Industrial shock absorber, Series SA2-MS
 ▶ for MSC-08-HM, MSC-12-HM, MSC-16-HM, MSC-20-HM, MSC-25-HM ▶ sealing for piston rod: Lip ring

3



Industrial shock absorber, Series SA2-RC
 ▶ for RCM-12, RCM-16, RCM-20, RCM-25 ▶ sealing for piston rod: Lip ring

5



Industrial shock absorber, Series SA2-RT
 ▶ for RTC-16, RTC-25,-32,-40, RTC-50,-63 ▶ sealing for piston rod: Lip ring

6

Cylinder accessories ▶ Shock absorbers

Industrial shock absorber, Series SA2-MS

▶ for MSC-08-HM, MSC-12-HM, MSC-16-HM, MSC-20-HM, MSC-25-HM ▶ sealing for piston rod: Lip ring



00127420

Ambient temperature min./max.	-20°C / +80°C
Medium	Oil
Mounting	Lock nut

The delivered product varies from that in the illustration. See the drawing for an exact description.

	Type	Stroke [mm]	for	Effective mass me min./max. [kg]	Return spring force min./max. [N]	Mounting thread	Part No.
	SA1-MC	5	MSC-08-HM	0.8 / 2.8	2 / 5	M6x0,5	R412010284
	SA2-MS	7	MSC-12-HM MSC-16-HM	1.7 / 50	2.5 / 6	M8x1	R412010370
	SA2-MS	10	MSC-20-HM	5 / 57	3.5 / 7	M12x1	R412010371
	SA1-MC	14	MSC-25-HM	9.9 / 76	13 / 23	M14x1,5	R412010305

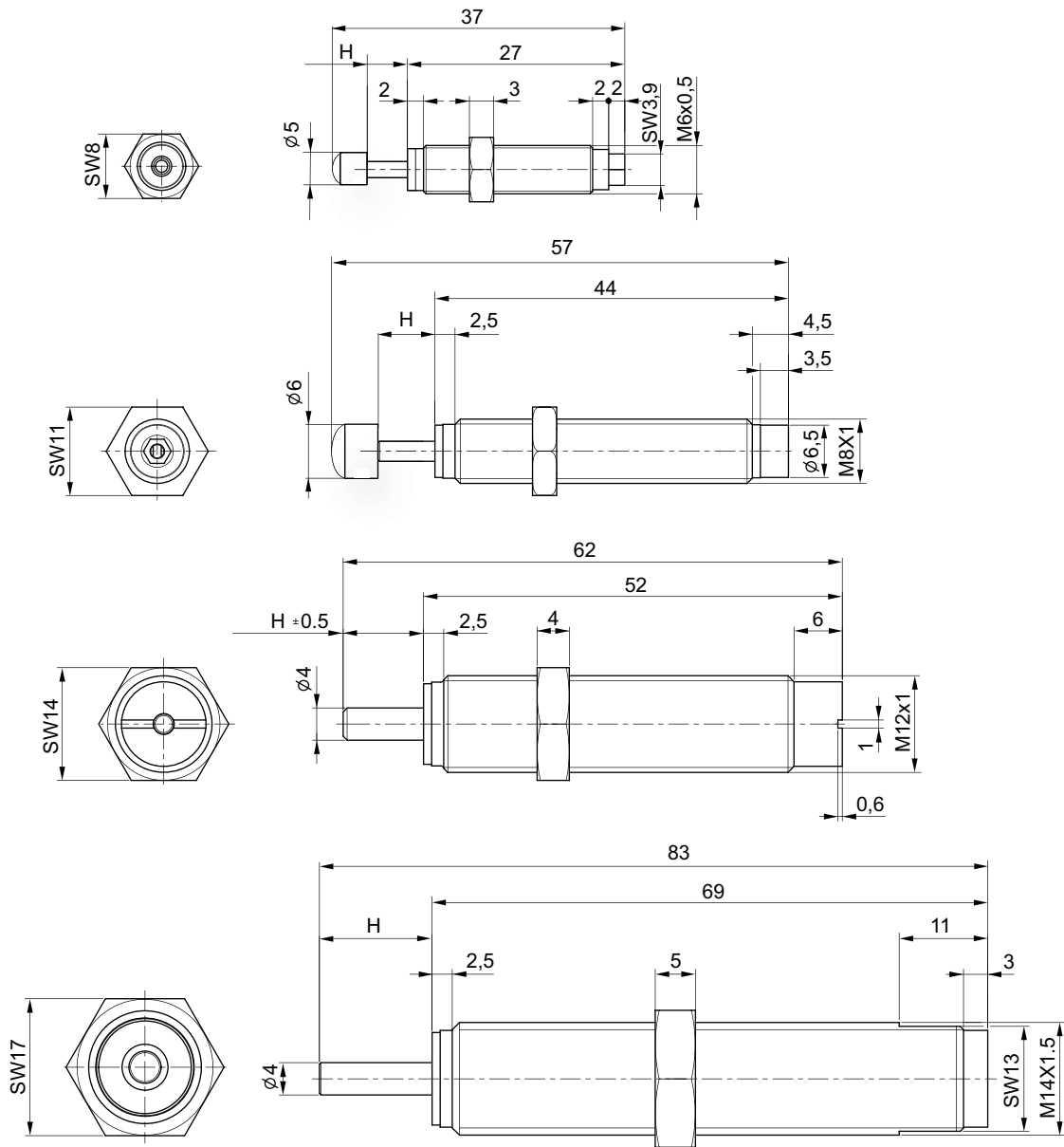
Part No.	Fig.	Note	Delivery unit
R412010284	Fig. 1	1); 3)	1
R412010370	-	1); 3)	
R412010371	-	2)	
R412010305	-	2)	

- 1) sealing for piston rod: Polyurethane
- 2) sealing for piston rod: Nitrile butadiene rubber
- 3) Stop: Polyoxymethylene
- Cylinder tube: Steel, salt bath nitrocarburized
- Piston rod: Stainless steel, hardened

Industrial shock absorber, Series SA2-MS

▶ for MSC-08-HM, MSC-12-HM, MSC-16-HM, MSC-20-HM, MSC-25-HM ▶ sealing for piston rod: Lip ring

Dimensions



22839

H = stroke

Cylinder accessories ▶ Shock absorbers

Industrial shock absorber, Series SA2-RC

▶ for RCM-12, RCM-16, RCM-20, RCM-25 ▶ sealing for piston rod: Lip ring



00135329

Ambient temperature min./max.

Medium

Mounting

Materials:

Cylinder tube

Piston rod

Lock nut

+0 °C / +60 °C

Oil

Lock nut

Steel, bronzed

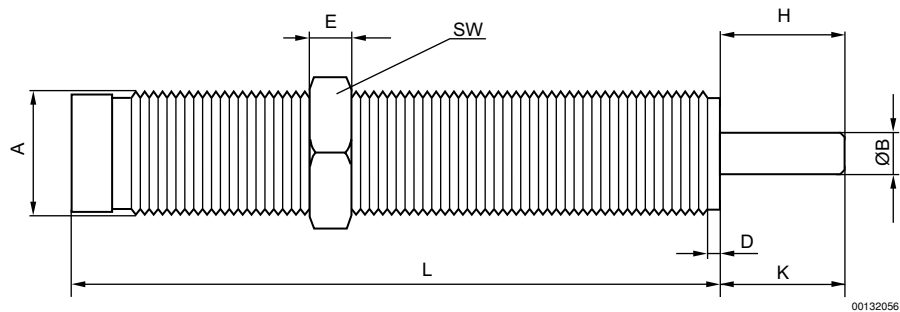
Stainless steel, hardened

Steel, bronzed

	Type	Stroke	for	Effective mass me min./max.	Return spring force min./max.	Mounting thread	Part No.
		[mm]		[kg]	[N]		
	SA2-RC	6	RCM-12	2.8 / 70	2.5 / 6	M8x1	R412004751
		6	RCM-16	6 / 280	3.5 / 8	M10x1	R412004752
		8.5	RCM-20	17 / 510	3.5 / 7	M12x1	R412004753
		9.5	RCM-25	100 / 420	23 / 35	M14x1,5	R412010089

Part No.	Delivery unit
R412004751 R412004752 R412004753 R412010089	1

Dimensions



00132056

H = stroke

A = mounting thread

Part No.	Type	Mounting thread	ØB	D	E	H	K	L	SW
R412004751	SA2-RC	M8x1	2.5	2.5	3	9	9	44	11
R412004752	SA2-RC	M10x1	3	2.5	3	9	9	49.5	13
R412004753	SA2-RC	M12x1	4	2.5	4	11	11	65	14
R412010089	SA2-RC	M14x1,5	4	2.5	5	14	14	69	17

Industrial shock absorber, Series SA2-RT

▶ for RTC-16, RTC-25,-32,-40, RTC-50,-63 ▶ sealing for piston rod: Lip ring



00135329

Ambient temperature min./max.

-10°C / +60°C

Medium

Oil

Mounting

Lock nut

Materials:

Cylinder tube


Steel, bronzed

Piston rod

Stainless steel, hardened

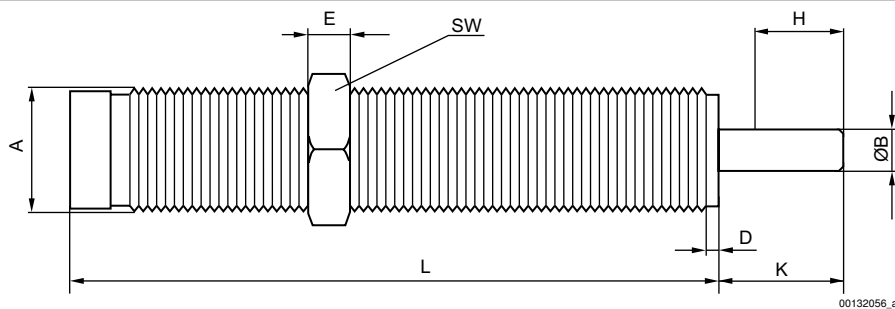
Lock nut

Steel, bronzed

Type	Stroke	for	Effective mass min./max.	Return spring force min./max.	Mounting thread	Part No.
	[mm]		[kg]	[N]		
 SA2-RT	10	RTC-16	0.5 / 1.8	3.5 / 7	M12x1	R412010695
	10	RTC-16	1.5 / 7.7	3.5 / 7	M12x1	R412010696
	10	RTC-16	5 / 57	3.5 / 7	M12x1	R412010697
	14	RTC-25,-32,-40	3.5 / 17	13 / 23	M14x1,5	R412010698
	14	RTC-25,-32,-40	9.9 / 76	13 / 23	M14x1,5	R412010699
	14	RTC-25,-32,-40	62 / 252	13 / 23	M14x1,5	R412010700
	13	RTC-50,-63	7.5 / 36	12 / 23	M20x1,5	R412010701
	13	RTC-50,-63	20 / 160	12 / 23	M20x1,5	R412010702
	13	RTC-50,-63	130 / 610	12 / 23	M20x1,5	R412010703

Part No.	Delivery unit
R412010695	1
R412010696	
R412010697	
R412010698	
R412010699	
R412010700	
R412010701	
R412010702	
R412010703	

Dimensions



00132056_a

H = stroke

A = mounting thread

Cylinder accessories ► Shock absorbers

Industrial shock absorber, Series SA2-RT

► for RTC-16, RTC-25,-32,-40, RTC-50,-63 ► sealing for piston rod: Lip ring

Part No.	Type	Mounting thread	ØB	D	E	H	K	L	SW		
R412010695	SA2-RT	M12x1	4	2.5	4	10	15	52	14		
R412010696	SA2-RT	M12x1	4	2.5	4	10	15	52	14		
R412010697	SA2-RT	M12x1	4	2.5	4	10	15	52	14		
R412010698	SA2-RT	M14x1,5	4	2.5	5	14	18.5	69	17		
R412010699	SA2-RT	M14x1,5	4	2.5	5	14	18.5	69	17		
R412010700	SA2-RT	M14x1,5	4	2.5	5	14	18.5	69	17		
R412010701	SA2-RT	M20x1,5	6	2.5	6	13	18	75	24		
R412010702	SA2-RT	M20x1,5	6	2.5	6	13	18	75	24		
R412010703	SA2-RT	M20x1,5	6	2.5	6	13	18	75	24		

Aventics GmbH
Ulmer Straße 4
30880 Laatzen
Phone +49 511 2136-0
Fax +49 511 2136-269
www.aventics.com
info@aventics.com

AVENTICS

Find more contact information at
www.aventics.com/contact

Only use the AVENTICS products shown in industrial applications. Read the product documentation completely and carefully before using the product.

Observe the applicable regulations and laws of the respective country. When integrating the product into applications, note the system manufacturer's specifications for safe use of the product.

The data specified only serve to describe the product.

No statements concerning a certain condition or suitability for a certain application can be derived from our information.

The information given does not release the user from the obligation of own judgment and verification.

It must be remembered that the products are subject to a natural process of wear and aging.

27-10-2014