

Directional valves ▶ Supplementary products

5/2-directional valve, Series 740

▶ Qn = 700 - 950 l/min ▶ pipe connection ▶ compressed air connection output: Ø 8x1 - Ø 10x1 ▶ Can be assembled into blocks ▶ Manual override: with detent ▶ suitable for ATEX



00134171

Version	Diaphragm poppet valve
Pilot	internal
Sealing principle	Soft sealing
Mounting on manifold strip	PRS strip
Working pressure min./max.	1.5 bar / 10 bar
Ambient temperature min./max.	-15°C / +60°C
Medium temperature min./max.	-15°C / +60°C
Medium	Compressed air
Max. particle size	50 µm
Oil content of compressed air	0 mg/m³ - 5 mg/m³
Materials:	
Housing	Polyoxymethylene
Seals	Acrylonitrile Butadiene Rubber

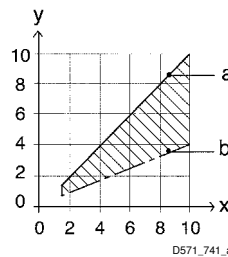
Technical Remarks

- The min. control pressure must be adhered to, since otherwise faulty switching and valve failure may result!
- The pressure dew point must be at least 15 °C under ambient and medium temperature and may not exceed 3 °C.
- The oil content of compressed air must remain constant during the life cycle.
- Use only the approved oils from AVENTICS, see chapter „Technical information“.

	Blocking principle	Compressed air connection				Flow rate value	Weight	Note	Part No.
		Input	Output	Exhaust	Pilot connection	Qn			
		Ø 8x1 Ø 10x1	Ø 8x1 Ø 10x1	M14x1	Ø 8x1	[l/min]			
	Single base plate principle, Plate principle	Ø 8x1 Ø 10x1	Ø 8x1 Ø 10x1	M14x1	Ø 8x1	700 950	0.23	1)	5717410000 5717460000

1) See diagram
Nominal flow Qn at p1 = 6.3 bar and Δp = 1 bar with throttle

Pilot pressure range



x: operating pressure (bar) y: control pressure (bar)
a: maximum control pressure depending on operating pressure
b: minimum control pressure depending on operating pressure

Supplementary products

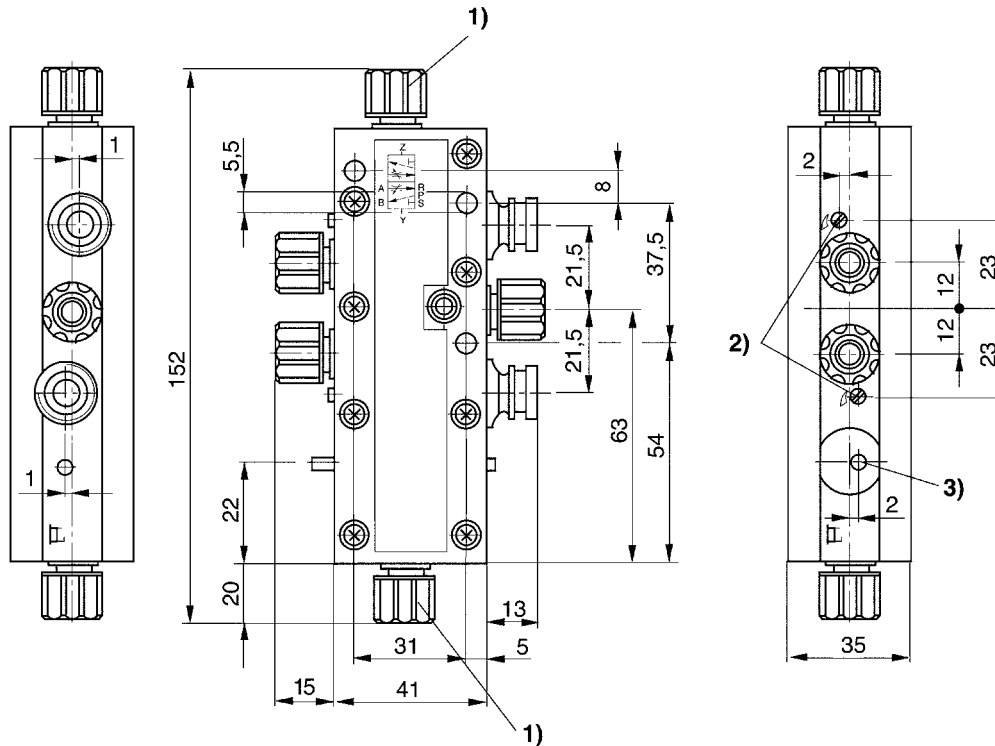
Part numbers marked in bold are available from the central warehouse in Germany, see the shopping basket for more detailed information

Pneumatics catalog, online PDF, as of 2014-10-30, ©AVENTICS S.a.r.l., subject to change

5/2-directional valve, Series 740

▶ $Q_n = 700 - 950 \text{ l/min}$ ▶ pipe connection ▶ compressed air connection output: $\text{Ø } 8 \times 1 - \text{Ø } 10 \times 1$ ▶ Can be assembled into blocks ▶ Manual override: with detent ▶ suitable for ATEX

Dimensions



D571_746

- 1) for pipe $\text{Ø } 8 \times 1$
- 2) flow control screw for exhausts 5 (R) and 3 (S)
- 3) position indicator