

## Valve systems ▶ Standardized valve systems

### 5/3-directional valve, Series 581, size 3

▶ Qn = 4100 l/min ▶ plate connection ▶ Pilot valve width: 30 mm ▶ compressed air connection output: Base plate ISO 5599-1 ▶ Basic valve for CNOMO pilot valve ▶ suitable for ATEX



00132320

Standards	ISO 5599-1
ATEX	2G Ex mb II T42D Ex tD A21 T130°C
Version	Spool valve
Pilot	External, internal
Sealing principle	Soft sealing
Blocking principle	Single base plate principle
Working pressure min./max.	-0.95 bar / 16 bar
Ambient temperature min./max.	-20°C / +70°C
Medium temperature min./max.	-20°C / +70°C
Medium	Compressed air
Max. particle size	50 µm
Oil content of compressed air	0 mg/m³ - 5 mg/m³
Pneumatic ports	Base plate ISO 5599-1
Protection class with electrical connector/plug	IP65
Duty cycle	100 %
Mounting screw	with hexagon socket
mounting screw tightening torque	10 Nm
Materials:	
Housing	Aluminum
Seals	Acrylonitrile Butadiene Rubber

#### Technical Remarks

- The min. control pressure must be adhered to, since otherwise faulty switching and valve failure may result!
- The pressure dew point must be at least 15 °C under ambient and medium temperature and may not exceed 3 °C.
- The oil content of compressed air must remain constant during the life cycle.
- Use only the approved oils from AVENTICS, see chapter „Technical information“.
- \* Note: ATEX version can be produced by combining the basic valve without coil with a series DO30 CNOMO pilot valve and an ATEX coil. ATEX ID: see ATEX coils catalog page.

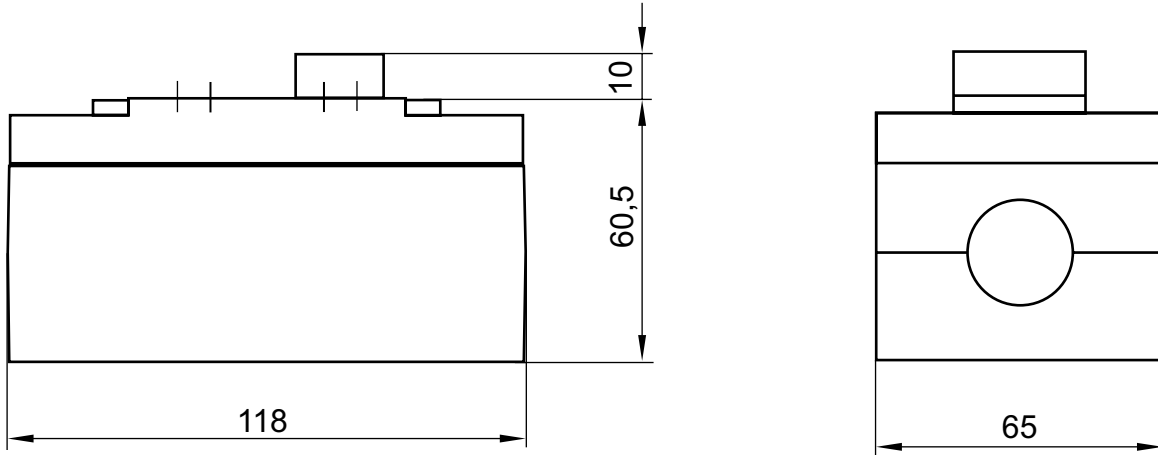
	Flow conductance	Qn	Control pressure min./max.	Weight	Note	Part No.
	C					
	[l/(s*bar)]	[l/min]	[bar]	[kg]		
	14.1	4100	3 / 16	0.85	1); 2)	<b>5813480000</b>
	14.1	4100	3 / 16	0.85	1); 2); 3)	5813481000
	14.1	4100	3 / 16	0.85	1); 2)	5813580000
	14.1	4100	3 / 16	0.85	1); 2); 3)	5813581000
	14.1	4100	3 / 16	0.85	1); 2)	5813780000
	14.1	4100	3 / 16	0.85	1); 2); 3)	5813781000

1) The pilot can be set by turning the seal under the valve cover by 180°.  
 2) For internal pilot the working pressure min/max is the same as the control pressure min/max.  
 3) with throttle  
 Basic valve without pilot valve  
 Nominal flow Qn at 6 bar and Δp = 1 bar

**5/3-directional valve, Series 581, size 3**

▶  $Q_n = 4100$  l/min ▶ plate connection ▶ Pilot valve width: 30 mm ▶ compressed air connection output: Base plate ISO 5599-1 ▶ Basic valve for CNOMO pilot valve ▶ suitable for ATEX

## Dimensions



00132641