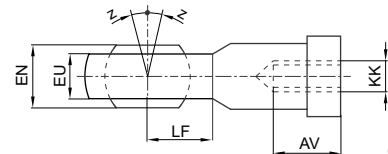
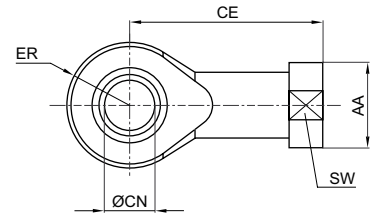


AP6, Ball eye rod end



00105172



00126602

| Part No. | KK | AA | AV min. | CE | Ø CN H7 | EN -0,1 | ER | EU max. | LF | SW | Z [°] max. |
|-------------------|----------|----|---------|-----|---------|---------|------|---------|----|----|------------|
| 1822124000 | M4 | 12 | 8 | 27 | 5 | 8 | 9 | 7.5 | 9 | 9 | 4 |
| 1822124001 | M6 | 13 | 9 | 30 | 6 | 9 | 10 | 7.5 | 10 | 11 | 4 |
| 1822124002 | M8 | 16 | 12 | 36 | 8 | 12 | 12 | 9.5 | 12 | 14 | 4 |
| 8958206402 | M10 | 19 | 20 | 43 | 10 | 14 | 14 | 10.5 | 13 | 17 | 6 |
| 1822124003 | M10x1,25 | 19 | 15 | 43 | 10 | 14 | 14 | 11.5 | 14 | 17 | 4 |
| 1822124004 | M12x1,25 | 22 | 18 | 50 | 12 | 16 | 16 | 12.5 | 16 | 19 | 4 |
| 1822124005 | M16x1,5 | 27 | 24 | 64 | 16 | 21 | 21 | 15.5 | 21 | 22 | 4 |
| 1822124006 | M20x1,5 | 34 | 30 | 77 | 20 | 25 | 25 | 18.5 | 25 | 30 | 4 |
| 1822124013 | M27x2 | 50 | 45 | 110 | 30 | 37 | 35 | 27 | 35 | 41 | 4 |
| 1822124008 | M36x2 | 60 | 56 | 125 | 35 | 43 | 40 | 32 | 40 | 50 | 4 |
| 1822124009 | M42x2 | 69 | 60 | 142 | 40 | 49 | 45.5 | 37 | 45 | 55 | 4 |
| 8958208842 | M48x2 | 75 | 65 | 160 | 50 | 60 | 58 | 45 | 60 | 65 | 6 |
| 8958208852 | M12 | 22 | 22 | 50 | 12 | 16 | 16 | 12 | 16 | 19 | 13 |
| 3660904000 | M12x1,25 | 22 | 16 | 50 | 12 | 12 | 17 | 8 | 16 | 19 | 8 |
| 3660905000 | M16x1,5 | 29 | 24 | 67 | 16 | 16 | 23 | 11 | 20 | 24 | 8 |
| 3660908000 | M20x1,5 | 34 | 30 | 77 | 20 | 20 | 26.5 | 13 | 23 | 30 | 8 |
| 3660912000 | M24x2 | 42 | 36 | 94 | 25 | 25 | 32 | 17 | 27 | 36 | 8 |
| 8958208002 | M24x2 | 42 | 36 | 94 | 25 | 31 | 30 | 23 | 30 | 36 | 15 |
| 8958209002 | M4 | 11 | 8 | 27 | 5 | 8 | 9 | 6 | 9 | 9 | 6.5 |
| 8958209012 | M6 | 13 | 9 | 30 | 6 | 9 | 10 | 6.75 | 10 | 11 | 6.5 |
| 8958209022 | M8 | 16 | 12 | 36 | 8 | 12 | 12 | 9 | 12 | 14 | 6.5 |
| 8958209032 | M10x1,25 | 19 | 15 | 43 | 10 | 14 | 14 | 10.5 | 14 | 17 | 6.5 |
| 8958209042 | M12x1,25 | 22 | 18 | 50 | 12 | 16 | 16 | 12 | 16 | 19 | 6.5 |
| 8958209052 | M16x1,5 | 27 | 24 | 64 | 16 | 21 | 21 | 15 | 21 | 22 | 7.5 |
| 8958209062 | M20x1,5 | 34 | 30 | 77 | 20 | 25 | 25 | 18 | 25 | 30 | 7.5 |
| 8958209072 | M27x2 | 50 | 45 | 110 | 30 | 37 | 35 | 25 | 35 | 41 | 7.5 |
| 2990690903 | M10x1,25 | 19 | 20 | 43 | 10 | 14 | 14 | 10.5 | 14 | 17 | 7 |
| 2990690904 | M12x1,25 | 22 | 22 | 50 | 12 | 16 | 16 | 12 | 16 | 19 | 7 |
| 2990690905 | M16x1,5 | 27 | 28 | 64 | 16 | 21 | 21 | 15 | 21 | 22 | 8 |
| 2990690908 | M20x1,5 | 34 | 33 | 77 | 20 | 25 | 25 | 18 | 25 | 32 | 8 |
| 2990600903 | M10x1,25 | 19 | 16 | 43 | 10 | 9 | 15 | 9 | 14 | - | 8 |
| 2990600904 | M12x1,25 | 22 | 18 | 50 | 12 | 12 | 17 | 9 | 16 | - | 8 |
| 2990600905 | M16x1,5 | 28 | 26 | 67 | 16 | 16 | 23 | 12 | 20 | - | 8 |
| 2990600908 | M20x1,5 | 32 | 32 | 77 | 20 | 20 | 26 | 14 | 23 | - | 8 |
| 2990600912 | M27x2 | 52 | 51 | 110 | 30 | 37 | 35 | 18 | 36 | - | 4 |
| 2990600916 | M36x2 | 53 | 53 | 125 | 35 | 35 | 42 | 24 | 37 | - | 6 |

AP6, Ball eye rod end

| Part No. | Material | Surface | Weight | Note | | | | | | |
|-------------------|--------------------------------|------------|--------|------|--|--|--|--|--|--|
| | | | [kg] | | | | | | | |
| 1822124000 | Steel | galvanized | 0.02 | - | | | | | | |
| 1822124001 | Steel | galvanized | 0.03 | - | | | | | | |
| 1822124002 | Steel | galvanized | 0.05 | - | | | | | | |
| 8958206402 | Steel | galvanized | 0.066 | - | | | | | | |
| 1822124003 | Steel | galvanized | 0.07 | - | | | | | | |
| 1822124004 | Steel | galvanized | 0.12 | - | | | | | | |
| 1822124005 | Steel | galvanized | 0.21 | - | | | | | | |
| 1822124006 | Steel | galvanized | 0.38 | - | | | | | | |
| 1822124013 | Steel | galvanized | 1.17 | - | | | | | | |
| 1822124008 | Steel | galvanized | 2 | - | | | | | | |
| 1822124009 | Steel | galvanized | 3.4 | - | | | | | | |
| 8958208842 | Steel | galvanized | 5.2 | - | | | | | | |
| 8958208852 | Steel | galvanized | 0.11 | - | | | | | | |
| 3660904000 | Steel | galvanized | 0.119 | 1) | | | | | | |
| 3660905000 | Steel | galvanized | 0.282 | 1) | | | | | | |
| 3660908000 | Steel | galvanized | 0.435 | 1) | | | | | | |
| 3660912000 | Steel | galvanized | 0.791 | 1) | | | | | | |
| 8958208002 | Steel | galvanized | 0.729 | - | | | | | | |
| 8958209002 | Stainless steel | - | 0.022 | - | | | | | | |
| 8958209012 | Stainless steel | - | 0.035 | - | | | | | | |
| 8958209022 | Stainless steel | - | 0.057 | - | | | | | | |
| 8958209032 | Stainless steel | - | 0.09 | - | | | | | | |
| 8958209042 | Stainless steel | - | 0.12 | - | | | | | | |
| 8958209052 | Stainless steel | - | 0.23 | - | | | | | | |
| 8958209062 | Stainless steel | - | 0.41 | - | | | | | | |
| 8958209072 | Stainless steel | - | 1.24 | - | | | | | | |
| 2990690903 | Stainless steel, acid-proof | - | 0.1 | - | | | | | | |
| 2990690904 | Stainless steel, acid-proof | - | 0.12 | - | | | | | | |
| 2990690905 | Stainless steel, acid-proof | - | 0.23 | - | | | | | | |
| 2990690908 | Stainless steel, acid-proof | - | 0.42 | - | | | | | | |
| 2990600903 | Stainless steel, acid-proof | - | 0.1 | - | | | | | | |
| 2990600904 | Stainless steel, acid-proof | - | 0.2 | - | | | | | | |
| 2990600905 | Stainless steel, acid-proof | - | 0.4 | - | | | | | | |
| 2990600908 | Stainless steel, acid-proof | - | 0.5 | - | | | | | | |
| 2990600912 | Stainless steel, acid-proof | - | 1.1 | - | | | | | | |
| 2990600916 | Stainless steel, acid-proof | - | 1.4 | - | | | | | | |

1) narrow version