

Gripper and vacuum technology ▶ Vacuum accessories

Vacuum accessories









Brochure

Rexroth
Pneumatics



Gripper and vacuum technology ▶ Vacuum accessories

Vacuum accessories

	Adapter, Series ACP	4
	Vacuum filter Inline, Series VFI ▶ G 1/8 - G 1/2	5
	Vacuum filter Inline, Series VFI ▶ Ø 4 - Ø 6 ▶ filter porosity: 50 µm	6
	replacement filter, Series VFI ▶ filter porosity: 50 µm	8
	Vacuum filter, cup version, Series VFC ▶ G 1/8 - G 3/4 ▶ filter porosity: 80 µm	9
	Reservoir, Series VFC ▶ Material: Polyamide	12
	replacement filter, Series VFC ▶ G 1/8 - G 3/4 ▶ filter porosity: 80 µm	13
	Spring-loaded plunger, Series PSL	14
	Angle joint, Series AJT	16
	Flow valve, Series VCK	17

Gripper and vacuum technology ▶ Vacuum accessories

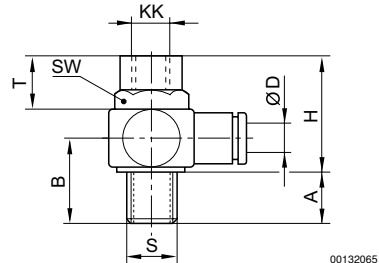
Vacuum accessories

Supplementary products, Vacuum accessories

on
line

Adapter, Series ACP


730-0851



00132065

Part No.	S	KK	Ø D	A	B	H	T	SW				
2738405040	M5	M4	4	4,5	10,5	21	5,5	8				
2738405050	M5	M5	4	4,5	10,5	21	5,5	8				
2738418040	G 1/8	M4	6	5,5	14,5	30	8	14				
2738418060	G 1/8	M6	6	5,5	14,5	30	8	14				
2738418080	G 1/8	M8	6	5,5	14,5	30	8	14				
2738414080	G 1/4	M8	8	8,5	17,5	31	10	17				
2738414100	G 1/4	M10x1,25	8	8,5	17,5	31	10	17				
2738438100	G 3/8	M10x1,25	8	8,5	18	34	11	22				
2738438120	G 3/8	M12x1,25	8	8,5	18	34	11	22				
2738438160	G 3/8	M16x1,5	8	8,5	18	34	11	22				

material: brass/polyamide

The adapter is designed for mounting a suction cup directly on a piston rod. The pipe connection, D, is located at the side.

KK = piston rod thread

S = Suction cups - Connection thread

Gripper and vacuum technology ▶ Vacuum accessories

Vacuum filter Inline, Series VFI

▶ G 1/8 - G 1/2



730-0891

Version
Medium

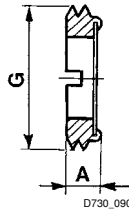
Vacuum filter
Compressed air

Materials:
Housing
Filter insert

Brass
tin bronze

	Port	Weight	Part No.
		[kg]	
	G 1/8	0.002	2737000180
	G 1/4	0.005	2737000140
	G 3/8	0.009	2737000380
	G 1/2	0.009	2737000120

Dimensions



D730_090

Part No.	Port G	G	A									
2737000180	G 1/8	G 1/8	3.5									
2737000140	G 1/4	G 1/4	5									
2737000380	G 3/8	G 3/8	5									
2737000120	G 1/2	G 1/2	5									

Vacuum filter Inline, Series VFI
▶ Ø 4 - Ø 6 ▶ filter porosity: 50 µm


00134217

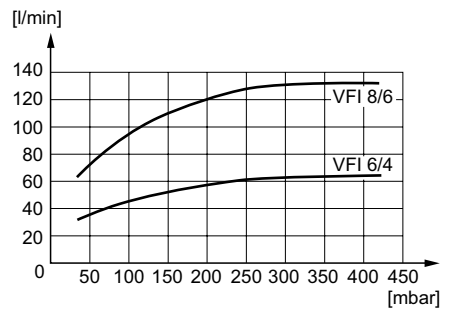
Version	Vacuum filter
Medium	Compressed air
Ambient temperature min./max.	+0°C / +50°C
Filter element	exchangeable
filter porosity	50 µm
Mounting	installing in piping
max. overpressure at 25° C	7 bar
max. overpressure at 50° C	5 bar
Max. vacuum level at p.opt	99 %
Materials:	
Housing	Polyamide
Seals	Acrylonitrile Butadiene Rubber
Filter insert	Polypropylene; Polyamide

Technical Remarks

- suitable connections: plastic tubing made of polyurethane and polyethylene

	Port	Qn [l/min]	Weight [kg]	Part No.
	Ø 4	32	0.007	R412010112
	Ø 6	66	0.012	R412010113

Nominal flow at $\Delta p = 40$ mbar

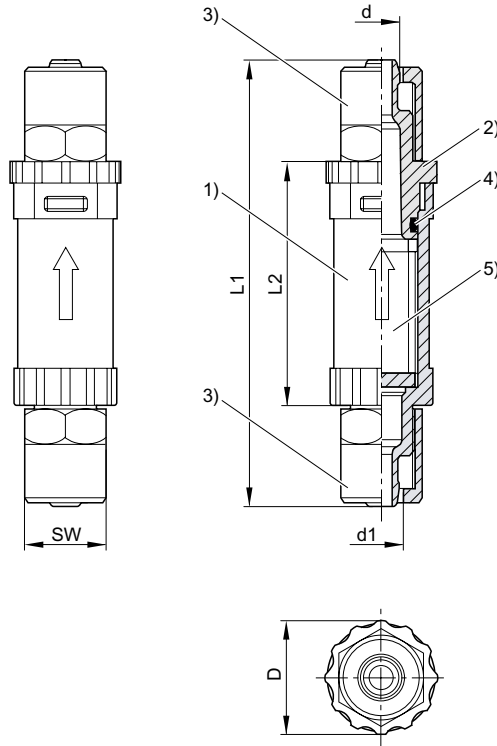
characteristics (flow volume)


00133968

Vacuum filter Inline, Series VFI

▶ Ø 4 - Ø 6 ▶ filter porosity: 50 µm

Dimensions



- 1) "transparent inline filter housing "
- 2) filter cover with bayonet catch
- 3) tube nut
- 4) O-ring
- 5) Filter

Part No.	Port G		d	d1	D	L1	L2	SW				
R412010112	Ø 4	VFI-6/4	4	6.2	16	62	34	12				
R412010113	Ø 6	VFI-8/6	6	8.2	23	70	41	14				

replacement filter, Series VFI

▶ filter porosity: 50 µm



00134218

Version
Medium
Ambient temperature min./max.
filter porosity

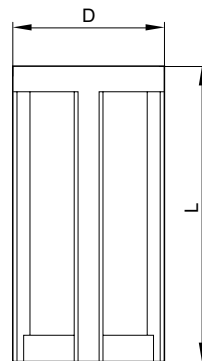
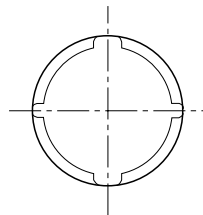
Materials:
Filter insert

Vacuum filter
Compressed air
+0°C / +50°C
50 µm

Polypropylene; Polyamide

	Weight	Scope of delivery	Part No.
	[kg]	[pieces]	
	0.004	5	R412010114
	0.005	5	R412010115

Dimensions



00133967

		D	L									
R412010114	VFI-6/4	10.4	20.5									
R412010115	VFI-8/6	16.2	22.5									

Gripper and vacuum technology ▶ Vacuum accessories

Vacuum filter, cup version, Series VFC

▶ G 1/8 - G 3/4 ▶ filter porosity: 80 μm



00112446_1

Version
Medium
Ambient temperature min./max.
Filter element
filter porosity

Materials:
Housing
Seals
Reservoir
Filter insert

Vacuum filter
Compressed air
+5°C / +52°C
exchangeable
80 μm

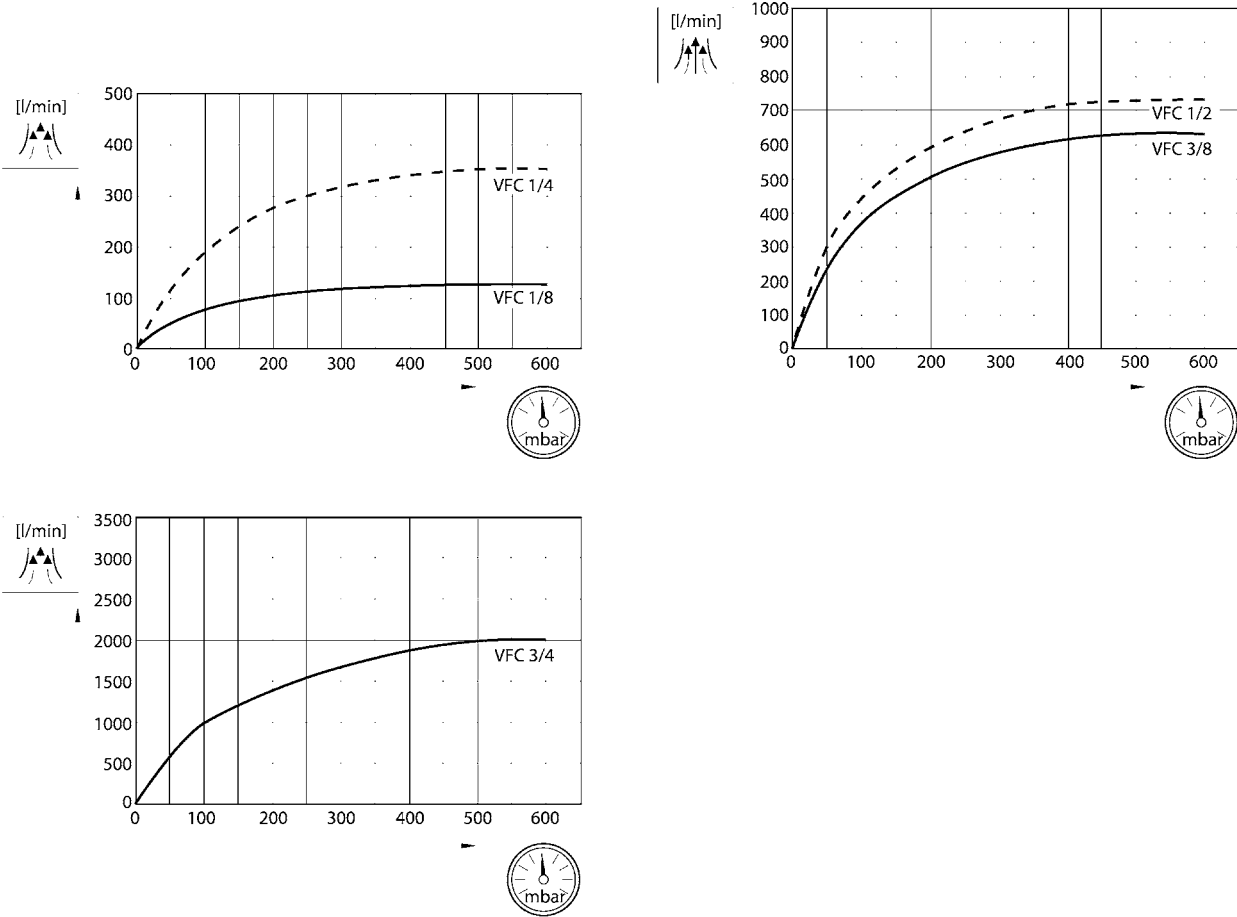
Polypropylene
Acrylonitrile Butadiene Rubber
Polyamide
Polyethylene

	Port	Qn [l/min]	Reservoir	Weight [kg]	Part No.
	G 1/8	45	Polyamide	0.049	0821305181
	G 1/4	110		0.047	0821305182
	G 3/8	245		0.079	0821305183
	G 1/2	300		0.076	0821305184
	G 3/4	600		0.164	0821305185
Nominal flow at Δp = 40 mbar					

Vacuum filter, cup version, Series VFC

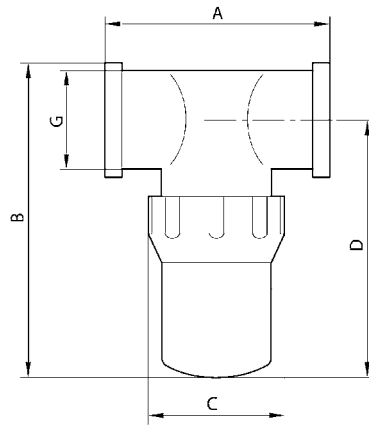
▶ G 1/8 - G 3/4 ▶ filter porosity: 80 µm

characteristics (flow volume)



00115823

Dimensions



00115824

Part No.	Port G	G	A	B	C	D					
0821305181	G 1/8	G 1/8	76	60	48	50					

Gripper and vacuum technology ▶ Vacuum accessories

Vacuum filter, cup version, Series VFC

▶ G 1/8 - G 3/4 ▶ filter porosity: 80 µm

Part No.	Port G	G	A	B	C	D						
0821305182	G 1/4	G 1/4	76	60	48	50						
0821305183	G 3/8	G 3/8	76	102	48	88						
0821305184	G 1/2	G 1/2	76	102	48	88						
0821305185	G 3/4	G 3/4	90.5	136.5	74.2	118						

Reservoir, Series VFC

▶ Material: Polyamide



00130328

 Version
 Version
 Medium

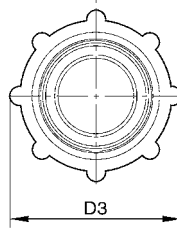
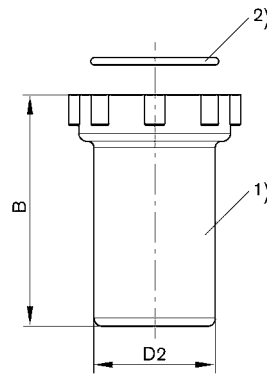
 Materials:
 Reservoir
 Seal

 Reservoir
 reservoir, PA, without protective guard
 Compressed air

 Polyamide
 Acrylonitrile Butadiene Rubber

Reservoir	Weight [kg]	Part No.
Polyamide	0.024	R961400171
Polyamide	0.036	R961400172
Polyamide	0.085	R961400173

Scope of delivery: reservoir, seal

Dimensions


00129356

- 1) Reservoir
 2) Seal

Part No.		B	D2	D3						
R961400171	VFC-1/8, VFC-1/4	33.7	37	48						
R961400172	VFC-3/8, VFC-1/2	67.3	35.2	48						
R961400173	VFC-3/4	91.4	55.1	74.2						

Gripper and vacuum technology ▶ Vacuum accessories

replacement filter, Series VFC

▶ G 1/8 - G 3/4 ▶ filter porosity: 80 μm



00129358

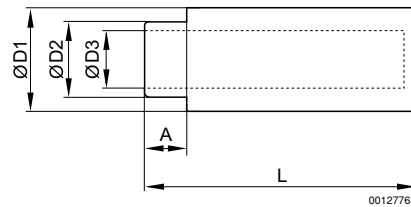
Version
Medium
Ambient temperature min./max.
filter porosity

Materials:
Filter insert

Vacuum filter
Compressed air
+5°C / +52°C
80 μm

Polyethylene

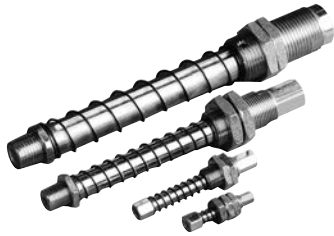
Dimensions



00127763

Part No.	Port G		A	Ø D1	Ø D2	Ø D3	L			
1827010689	G 1/8	VFC-1/8, VFC-1/4	11	25	19.5	15	37			
1827010690	G 3/8	VFC-3/8, VFC-1/2	11	25	19.5	15	71			
1827010691	G 3/4	VFC-3/4	10	39	33	27.5	88.5			

Spring-loaded plunger, Series PSL



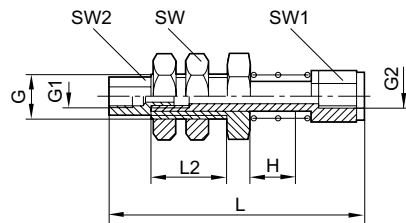
00112442

Version not non-rotating
 Ambient temperature min./max. 0 °C / 80 °C

Materials:
 Housing Steel, galvanized
 Guide bushing Brass
 Spring spring steel
 Nut Steel, galvanized

Spring rate	Spring pre-tensioning	Max. vertical load (static)	Max. horizontal load (static)	Bending moment	Weight	Fig.	Part No.
[N/mm]	[N]	[N]	[N]	[Nm]	[kg]		
0.596	1.49	550	47	0.7	0.009	Fig. 1	0821305171
0.323	2.75	1500	97	2.2	0.019	Fig. 1	0821305172
0.221	3.53	3700	385	13.9	0.08	Fig. 2	0821305173
0.143	3.57	3700	283	13.9	0.09	Fig. 2	0821305174
0.097	2.92	3700	173	13.9	0.11	Fig. 2	0821305175
0.711	6.47	2400	747	36.6	0.145	Fig. 2	0821305176
0.452	1.4	2400	466	36.6	0.175	Fig. 2	0821305177
0.262	5.38	2400	340	36.6	0.19	Fig. 2	0821305178
3.829	25.64	4900	1870	99.1	0.4	Fig. 2	0821305179
1.072	37.2	4900	800	99.1	0.53	Fig. 2	0821305180

Fig. 1



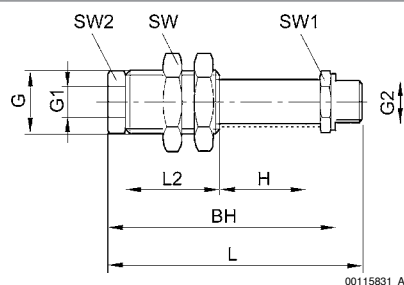
00115830_A

H = stroke

Part No.	G	G1	G2	H	L	L2	SW	SW1	SW2			
0821305171	M6x0,75	M3	M3	5	33.5	10	10	7	4.5			
0821305172	G 1/8	M5	M5	10	47.2	15	14	7	7			

Spring-loaded plunger, Series PSL

Fig. 2



H = stroke

Part No.	G	G1	G2	H	L	L2	SW	SW1	SW2	BH
0821305173	M16x1	G 1/8	G 1/8	15	80	30	22	14	12	73.5
0821305174	M16x1	G 1/8	G 1/8	25	93	30	22	14	12	86.5
0821305175	M16x1	G 1/8	G 1/8	50	124	30	22	14	12	117.5
0821305176	M20x1,5	G 1/8	G 1/4	25	94.5	40	24	17	17	86
0821305177	M20x1,5	G 1/8	G 1/4	50	124	40	24	17	17	115.5
0821305178	M20x1,5	G 1/8	G 1/4	75	153.5	40	24	17	17	145
0821305179	M30x1,5	G 3/8	G 1/2	25	116	55	36	24	24	105.3
0821305180	M30x1,5	G 3/8	G 1/2	75	187	55	36	24	24	176.5

Angle joint, Series AJT


00112443_1

Materials:

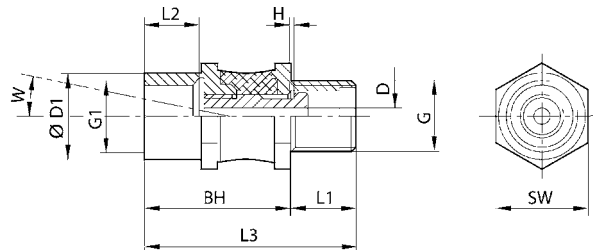
 Housing
 Rubber bearing

 Steel
 caoutchouc

Technical Remarks

- Note: high-load rubber/metal connection as a swivel joint.

Max. vertical load (static)	Bending moment	Weight	Part No.
[N]	[Nm]	[kg]	
500	8	0.026	0821305168
750	10	0.03	0821305169
3000	50	0.1	0821305170

Dimensions


00115832

Part No.	G1	G	Ø D1	D	L1	L2	L3	BH	H	SW	W
0821305168	G 1/4	M10x1,25	16	2.8	8	10.5	35	27	1.5	17	12°
0821305169	G 1/4	G 1/4	16	3	12	12	39	27	1.5	17	12°
0821305170	G 1/2	G 1/2	26	6	14	14	47.5	33.5	1.3	27	12°

Flow valve, Series VCK



00110423

Ambient temperature min./max.
Medium

+0°C / +60°C
Compressed air

Materials:
Housing

Aluminum, anodized

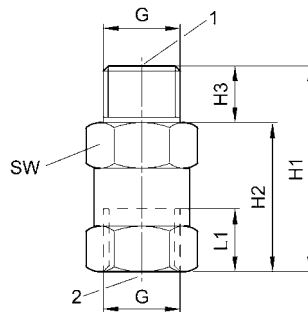
Technical Remarks

- Non-return valve with ball seat: closes the suction line if leak air escapes from a suction cup that is not on or not fully on the workpiece. Adjustment of the suction cup is no longer necessary if handling plane workpieces. Installed filter prevents valve contamination.

	Port 1	Port 2	Min. suction volume for		Max. flow rate during blow-off	Weight	Part No.
			Pu = -0.3 bar	Pu = -0.6 bar	1)	[kg]	
			[l/min]	[l/min]			
	M5	M5	1.2	1.3	80	0.002	0821305043
	G 1/8	G 1/8	2.3	2.5	310	0.011	0821305044
	G 1/4	G 1/4	2.9	3.4	340	0.018	0821305045
	G 3/8	G 3/8	7.3	8	590	0.03	0821305046
	G 1/2	G 1/2	8.1	9	790	0.047	0821305047

1) Blow-off pressure: 5 bar

Dimensions



00110001

vacuum ejector connection 1
suction cup connection 2

Part No.	G	H1	H2	H3	L1	SW		
0821305043	M5	20	15.5	4.5	4.5	8		
0821305044	G 1/8	34	26	8	8.5	14		
0821305045	G 1/4	36	26	10	11	17		
0821305046	G 3/8	39	29	10	12	22		
0821305047	G 1/2	41	29	12	14	27		

Aventics GmbH
Ulmer Straße 4
30880 Laatzen
Phone +49 511 2136-0
Fax +49 511 2136-269
www.aventics.com
info@aventics.com

AVENTICS

Find more contact information at
www.aventics.com/contact

Only use the AVENTICS products shown in industrial applications. Read the product documentation completely and carefully before using the product.

Observe the applicable regulations and laws of the respective country. When integrating the product into applications, note the system manufacturer's specifications for safe use of the product.

The data specified only serve to describe the product.

No statements concerning a certain condition or suitability for a certain application can be derived from our information.

The information given does not release the user from the obligation of own judgment and verification.

It must be remembered that the products are subject to a natural process of wear and aging.

27-10-2014